

# CORDERO CHANNEL

BRITISH COLUMBIA/COLOMBIE-BRITANNIQUE



CANADA

EAST THU  
ISLAND

Vessel:	VRN:	Tab #:
Fishery: (circle one) ---- RSU ---- GSU ---- CUKE ---- DUX ----		
Dive Site Ref.	Dive Date	Validation ID #

Note: The management areas shown on this chart are to be used as a guide only. For more exact info refer to the Pacific Fishery Management Area Regulations. THIS CHART IS NOT INTENDED FOR NAVIGATIONAL PURPOSES. [www.d-pacificfisheries.com](http://www.d-pacificfisheries.com)

13C

13-24

13-26

13-25

13C

13-11

13C

23

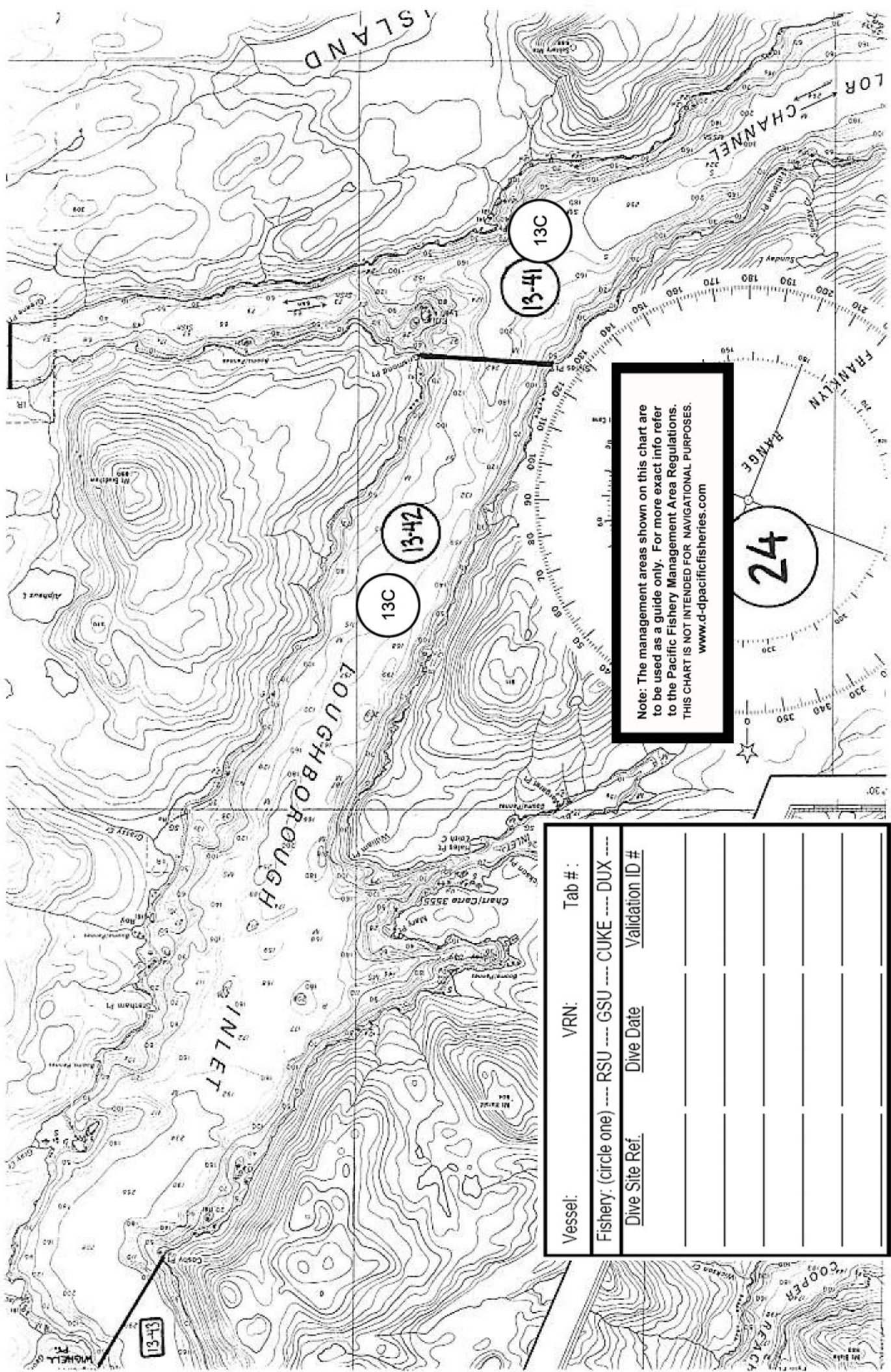
13-27

13B

13B

13-28

13-28



Note: The management areas shown on this chart are to be used as a guide only. For more exact info refer to the Pacific Fishery Management Area Regulations. THIS CHART IS NOT INTENDED FOR NAVIGATIONAL PURPOSES. [www.d-pacificfisheries.com](http://www.d-pacificfisheries.com)

Vessel:	VRN:	Tab #:
Fishery: (circle one) --- RSU --- GSU --- CUKE --- DUX ---		
Dive Site Ref.	Dive Date	Validation ID #

13-41 13C

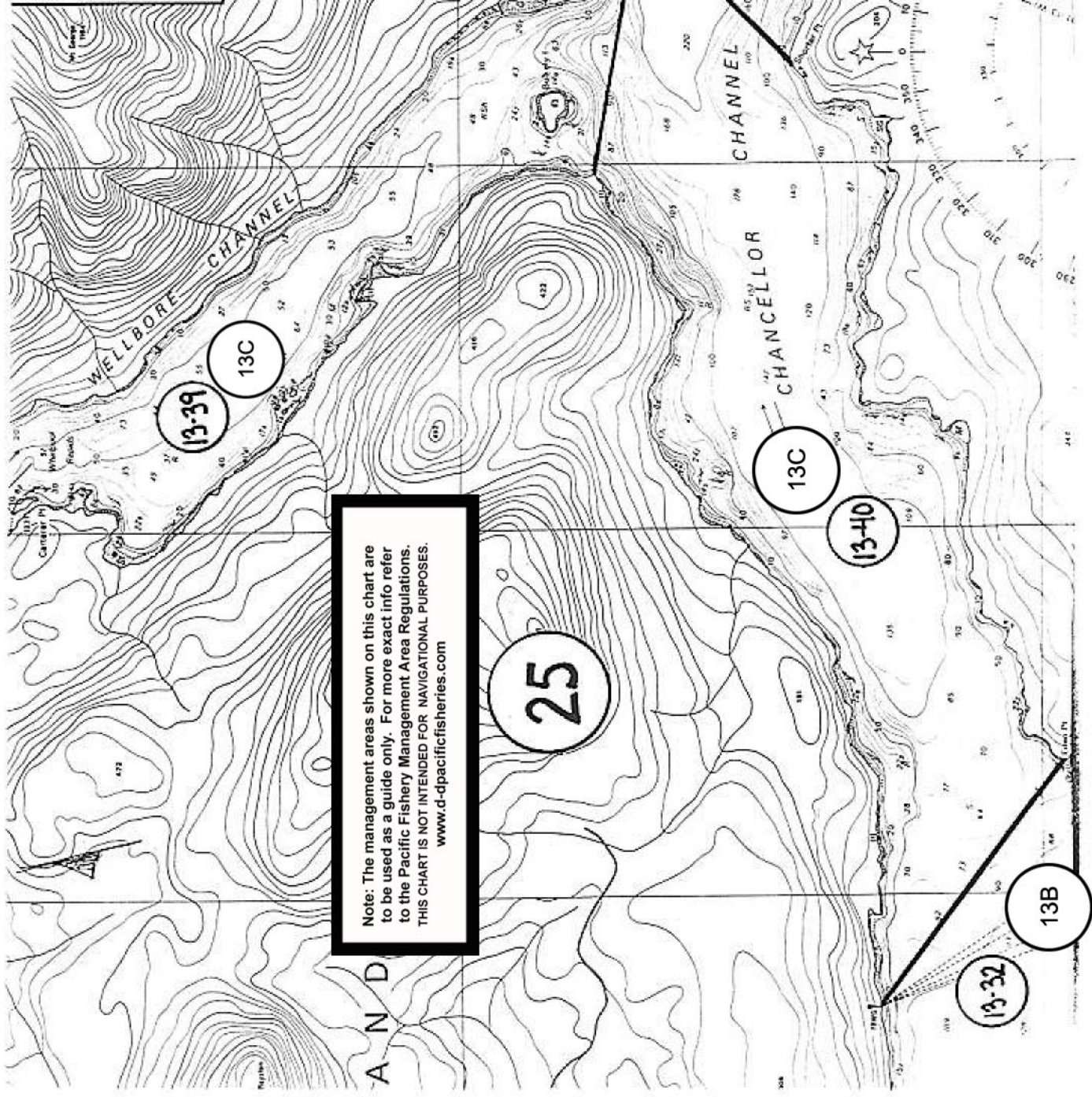
13-42

13C

24

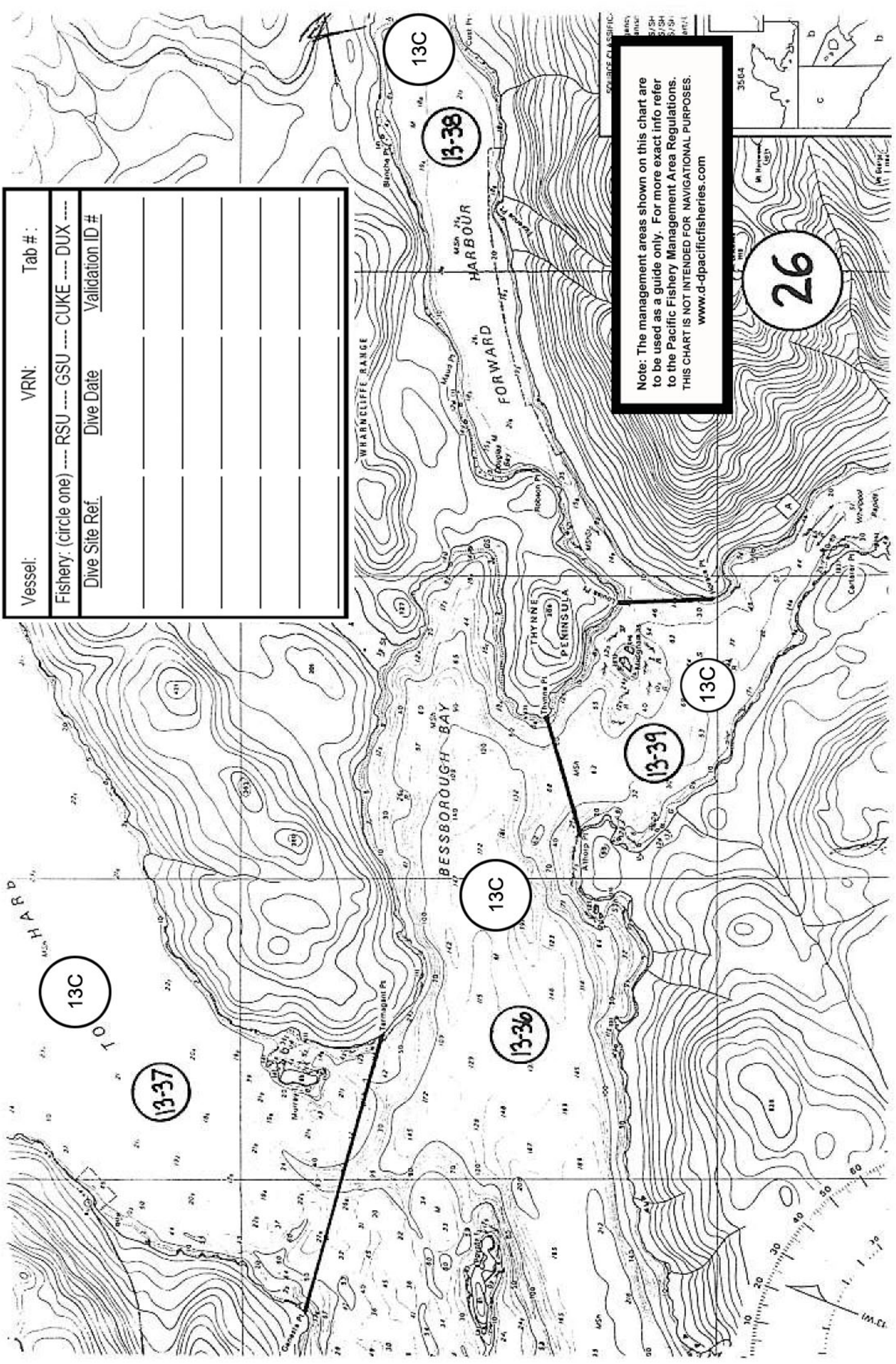
13-43

Vessel:	VRN:	Tab #:
Fishery: (circle one) ---- RSU ---- GSU ---- CUKE ---- DUX ----		
Dive Site Ref.	Dive Date	Validation ID #



Note: The management areas shown on this chart are to be used as a guide only. For more exact info refer to the Pacific Fishery Management Area Regulations. THIS CHART IS NOT INTENDED FOR NAVIGATIONAL PURPOSES. [www.d-pacificfisheries.com](http://www.d-pacificfisheries.com)

Vessel:	VRN:	Tab #:
Fishery: (circle one) ---- RSU ---- GSU ---- CUKE ---- DUX ----		
Dive Site Ref.	Dive Date	Validation ID #



Note: The management areas shown on this chart are to be used as a guide only. For more exact info refer to the Pacific Fishery Management Area Regulations. THIS CHART IS NOT INTENDED FOR NAVIGATIONAL PURPOSES. [www.d-tpacificfisheries.com](http://www.d-tpacificfisheries.com)